



SMART ESTIMATOR

What's New 2022



Windows 11

Windows 11 is now supported.

Force unlock project

It is now possible to force a project to unlock.



This can only be done if the project was locked by you, using your current Windows login credentials on this computer.

This is helpful when, for example, a power outage causes a project to become locked and SMART Estimator is no longer open.



Performance

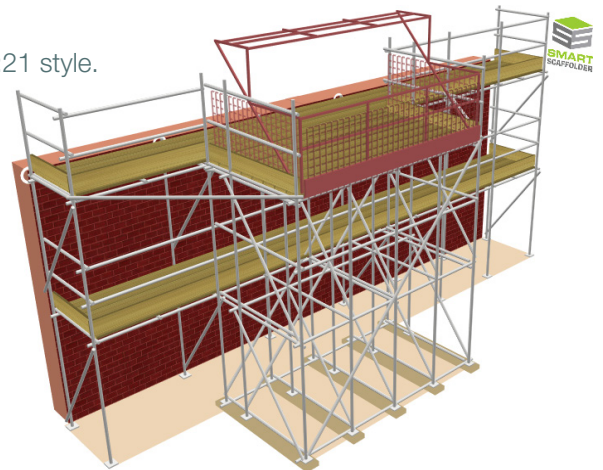
Launch speed has been improved when connected to cloud storage.

TG20:21 style loading bays

Tube and Fitting loading bays have been updated to the NASC TG20:21 style.

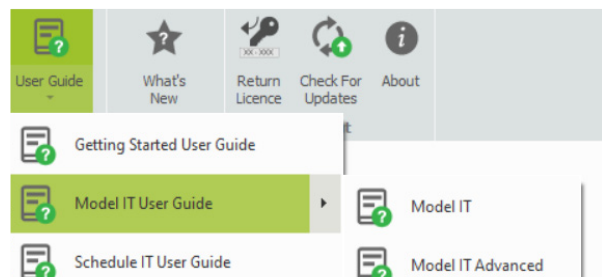
This includes options for:

- Styles: with and without beams
- Widths: 8 and 10 (6 + 2 and 3 + 4 + 3) boards wide
- Bay lengths: 2 x 2.00 m, 2 x 1.80 m, 2 x 1.50 m, 4 x 0.90 m, and 4 x 0.75 m.
- Scheduled loading bays
- Attached 3D modelled loading bays



Improved user guides

The Model IT user guide has been split in two: the basics are in the Model IT user guide, while more complex features have been moved to Model IT: Advanced.



GLOBAL CONSTRUCTION SOFTWARE AND SERVICES
Computer and Design Services Ltd, Arrowsmith Court, Broadstone, Dorset, BH18 BAX, UK



Microsoft Partner
Gold Application Development

Fixes and minor improvements

- An issue causing the wind map to sometimes not appear has been fixed.
- The look of base plates on independents has been improved when high visibility (safety) standards are present.
- The layout of rakers has been improved when hop-up platforms are present.
- When checking for updates, the layout of text has been improved for the release summary.
- Double sole boards and sole pads have been corrected to look better in the 3D model.
- Fixed a subtle pricing issue with birdcages when labour is priced using m² of lift area. This issue mainly affected system scaffolds. This price is now consistent for birdcages with the same final dimensions, even when the input dimensions (the “area to fill”) are different.
- Scheduled system loading bays now have an inner ledger on scheduled structural lifts. This is an improvement since the parent scaffold is unlikely to have a ledger at this position.
- Improved the message when a server upgrade fails.
- Quotation letters from older versions of SMART Estimator are no longer laid out incorrectly.
- A message asking estimators to re-check their quote layout is no longer shown.
- In drawings, switching from loading bay to another scaffold type no longer causes the dimensions to move.
- Fixed the address book search box so it no longer reverses the text that you typed.
- The auto update app is digitally signed.
- Fixed an issue with the lift area pricing calculations for multi-lift birdcages.
- Fixed an issue with the Scaffold Type dropdown in Schedule IT.
- Improved the reliability of the tool for checking for updates.
- Added per metre and per foot pricing options to the 13’ ladder beam component.
- Fixed an issue when changing the scaffolding system in Schedule IT for some system configuration names.
- Fixed an issue saving and generating a material list for some very tall scaffolds.
- Elevations no longer detach from the rest of the independent when an elevation image is added, and the scaffold is hidden.
- Improved the positioning of attached chimney stack scaffolds in the 3D exports.
- Fixed a rare crash that occurs for some L-shaped scaffolds.
- Fixed a rare crash that occurs when splitting some elevations.
- When applying brickguards multiple times to the same lift, the materials no longer change.
- Tweaked the ladder position for reversed independents so the ladder no longer clips through the toe board.
- When using the Email As option, a warning message is now shown if Microsoft Outlook is already launched with incompatible privileges, explaining how to correct the issue.
- Fixed an issue when editing quote templates with specific sizes of image present.

