

SMART Estimator

What's New 2021



Get Compliant

The next version of the UK guidance for tube and fitting scaffolding, TG20:21 is coming out soon. To celebrate this, the TG20:13 summary report has been refreshed with a much improved style.

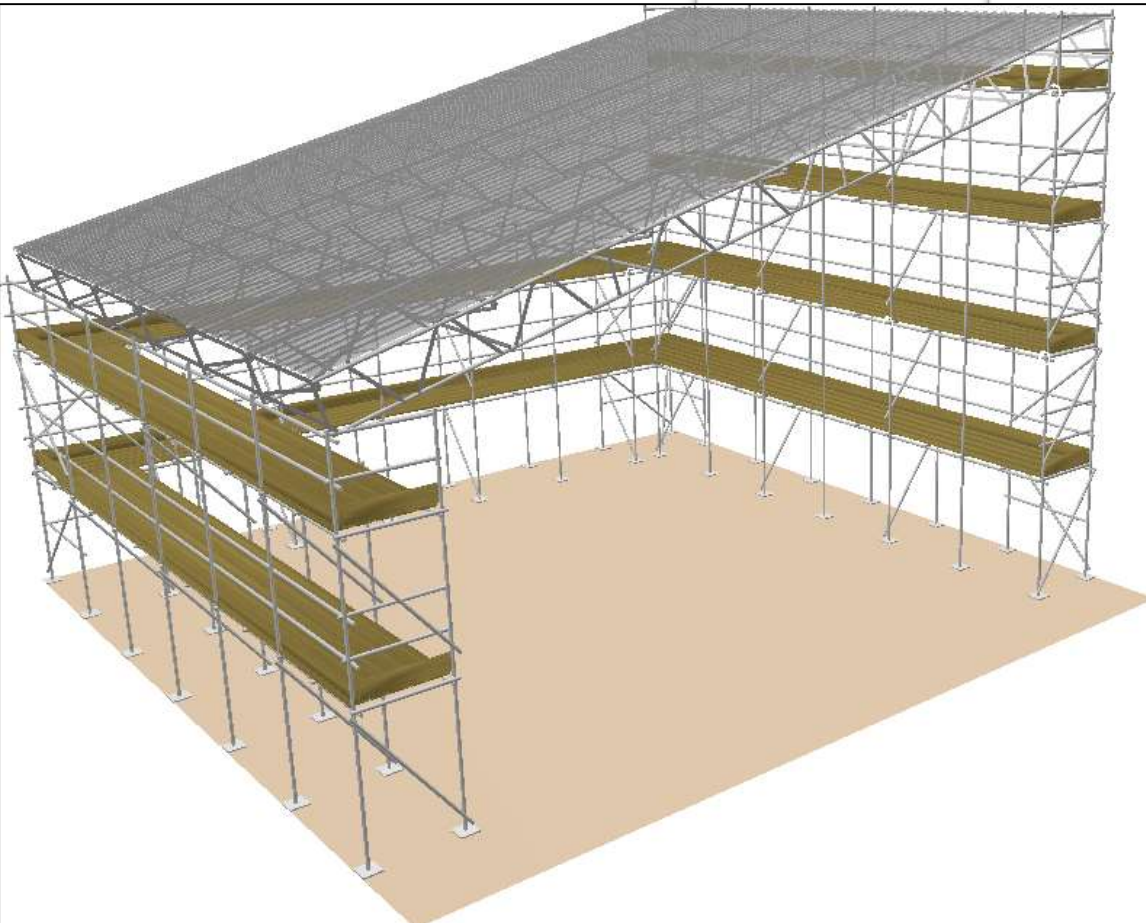
Check IT TG20:13 Plus

TG20:13 compliance certificates are now available.

Temporary Roofs

Tube and Fitting Temporary roofs are now available!

The image shows two documents. On the left is the 'TG20:13 Summary Report' with sections for 'Check details', 'Site details', and 'Scaffolds which are compliant'. On the right is a 'Nasc Independent scaffolding' compliance certificate. The certificate includes a red circular stamp that reads 'DESIGNED BY CALCULATION', 'TG20 COMPLIANT', and 'NASC'. It lists design height, maximum loading, ties, location, and criteria for erection. At the bottom right of the certificate is a signature and date.



Cloud storage

Share your data in the SMART Scaffolder cloud. Work from home even more easily!



GLOBAL CONSTRUCTION SOFTWARE AND SERVICES
Computer and Design Services Ltd, Arrowsmith Court, Broadstone, Dorset, BH18 8AX, UK



SMART Estimator

What's New 2021





Next level BIM

- Import 3D building models, and then trace them to create stunning images.
- Export to **3D PDF** or **3D HTML**– your customer can open and see from all angles!
- Export to 3D DWG (AutoCAD)!



Risk Assessments and Method Statements

Number : P-0001-S (RA 1)
Name : Risk assessment P-0001-S (RA 1)

Risk Assessment

No.	Hazard	Persons affected	Risk rating	Standard control measures	Additional measures	Residual risk
1.	Falls from scaffold. Slips trips and falls.	Scaffolders Site supervisors	High	Point of work risk assessments to be undertaken if the presence of adverse weather is present or forecast. Where possible, indoor or sheltered work should be allocated where appropriate. Point of work risk assessments should consider the duration and location of the work, weather forecasts and work positions at the work face. (High level, low level etc) Good communication must exist between the site personnel and management/supervision to ensure that safe systems of work are maintained. Supervision will monitor the environmental working conditions to ensure that employees are not put at risk. Wet weather clothing may be utilised; however, Supervision will determine when work will be required to suspend/cease due to adverse environmental conditions.		Low
2.	Failure of lifting equipment. Overturning of vehicle. Falls from vehicle.	Scaffolders Site supervisors Site personnel General public	High	Operators to be competent in the equipment to be used. Lorry mounted cranes and ancillary equipment to be inspected and thoroughly examined as per statutory and manufacturers guidance. Ensure ground conditions are adequate to support vehicle and load to be lifted. Operator to be aware of residual hazards such as overhead power lines etc. If access to the rear of the vehicle is required a safe system of work at height must be agreed and implemented. A bankman to be used where appropriate during operation of the vehicle and crane.		Low



Create, store and track risk assessments and method statements!

Plus many, many more improvements!

